



المبادئ الإرشادية السريرية لدولة قطر
NATIONAL CLINICAL GUIDELINES FOR QATAR

Clinical Guidelines

for the State of Qatar



**TRANSFORMING
HEALTHCARE**



الاستراتيجية الوطنية للصحة
National Health Strategy





Content

- Overview & Background
- Rational & Project Overview
- The Guideline Development Process
- Pathway
- As a Starting Point..
- User Manual & Quick Reference Guide
- Information Comm. Technology Development
- Sustainability



Clinical Guidelines for the State of Qatar

“Our stakeholders provide us with an opportunity to learn and excel, they also happen to be community champions who help drive success”

MOPH Clinical Guideline Development team, 2016



Overview and Background

In accordance with Qatar's National Vision 2030 and the National Health Strategy (NHS) 2011-2016, NHS Project 2.1.2 represents a significant opportunity to enhance the quality of healthcare in Qatar. Through this project high quality evidence-based guidelines will be localized and made relevant to the culture, customs, practice and formulary of Qatar, an initiative which the Ministry of Public Health (MOPH) believes has great potential in driving sustainable improvements in the quality of care at the national level. The project works in collaboration with various MOPH projects with an overarching goal of delivering optimal, state-of-the-art healthcare services by setting care standards to guide the care delivery process within provider organizations.

Rationale and Project Overview

The majority of healthcare practitioners working in Qatar have been trained overseas. As we draw upon the advantages brought forward by the diverse set of specialized skills, languages and perspectives in patient and peer interactions, it is also of utmost importance to acknowledge that this also contributes to a significant variation in the standards of care provided.

The project has been underway since April 2015. Initially, through consultations with stakeholders, the MOPH Clinical Guideline Development team mapped the processes for guideline development and/or localization by different organizations across the health economy. The gap between current practice in Qatar and the international best practice approach was identified and accordingly a model for guideline development was put in place.

Analysis of healthcare data provided by the major stakeholder organizations helped identify the priority long term conditions, causes for admission to secondary care and conditions presenting for readmission within 30 days after discharge.


To achieve the best possible health outcomes and drive optimized levels of care across Qatar, the MOPH is currently working with local providers to develop and disseminate Clinical Guidelines for the most common conditions identified during the analysis phase. Furthermore, to ensure maximum adoption, the MOPH Clinical Guideline development team is working closely with the Ministry's Information



Communication Technology (ICT) team to ensure that the Guidelines are made accessible via the MOPH website in an easy to consult format. To encourage adoption, a countrywide change management program that reaches out to end users such as healthcare providers and payers is underway. The first set of developed and approved Guidelines and Pathways will be piloted in 2016, thereafter this will be followed by roll-out and implementation of the remaining Guidelines.

The project will see the development of 30 national guidelines. Throughout this project the MOPH Guideline development team will undergo activities that will continue to build internal capacity in order to facilitate ongoing National Guideline development, maintenance and evaluation beyond the life of the project.

Project Deliverables

- 
- Evidence-based clinical guidelines based on international best practice
 - Framework for the localization of guidelines to the Qatari context
 - Thirty National Guidelines including piloting of first set of Guidelines and Pathways followed by overall implementation
 - Clinical Care Pathways and implementation of the pathways
 - Broad stakeholder engagement
 - Evidence-based change management
 - Building internal capacity within the MOPH to undertake National Guideline development
 - Process for ongoing support, maintenance and evaluation of National Guidelines and Pathways



MOPH Project Board

- Nominates members of the Clinical Governance Steering Committee (CGSC)
- Ensures no conflict of interest among CGSC members
- Appoints MOPH Project Manager and Guidelines Development Team to support the project
- Acts as the ultimate point of escalation for Project Governance

Clinical Governance Steering Committee

- Ensures no conflict of interest among Guideline Development Group (GDG) members
- Reviews and approves proposed prioritization of topics
- Nominates appropriate GDG members
- Reviews and approves National Guidelines and Pathways

Guideline Development Groups

- Meet to review baseline Hearst Health guidance
- Review feedback and approval of the modified Guidelines and Pathway
- Modify Guidance to the Qatari context

The Guideline Development Process

1. Analysis of healthcare data related to priority topics
2. CGSC reviews and approves prioritized topics
3. Workshops held for GDG members, the MOPH staff facilitate the workshops



but do not influence the Guideline content

4. GDG review and modify Map of Medicine Referral Guides and MCG Guidelines
5. GDG review and finalize draft National Guideline in preparation for CGSC approval
6. CGSC reviews and approves draft National Guideline
7. Guideline published to an open-access portal accessible via an MOPH website link.

Pathway

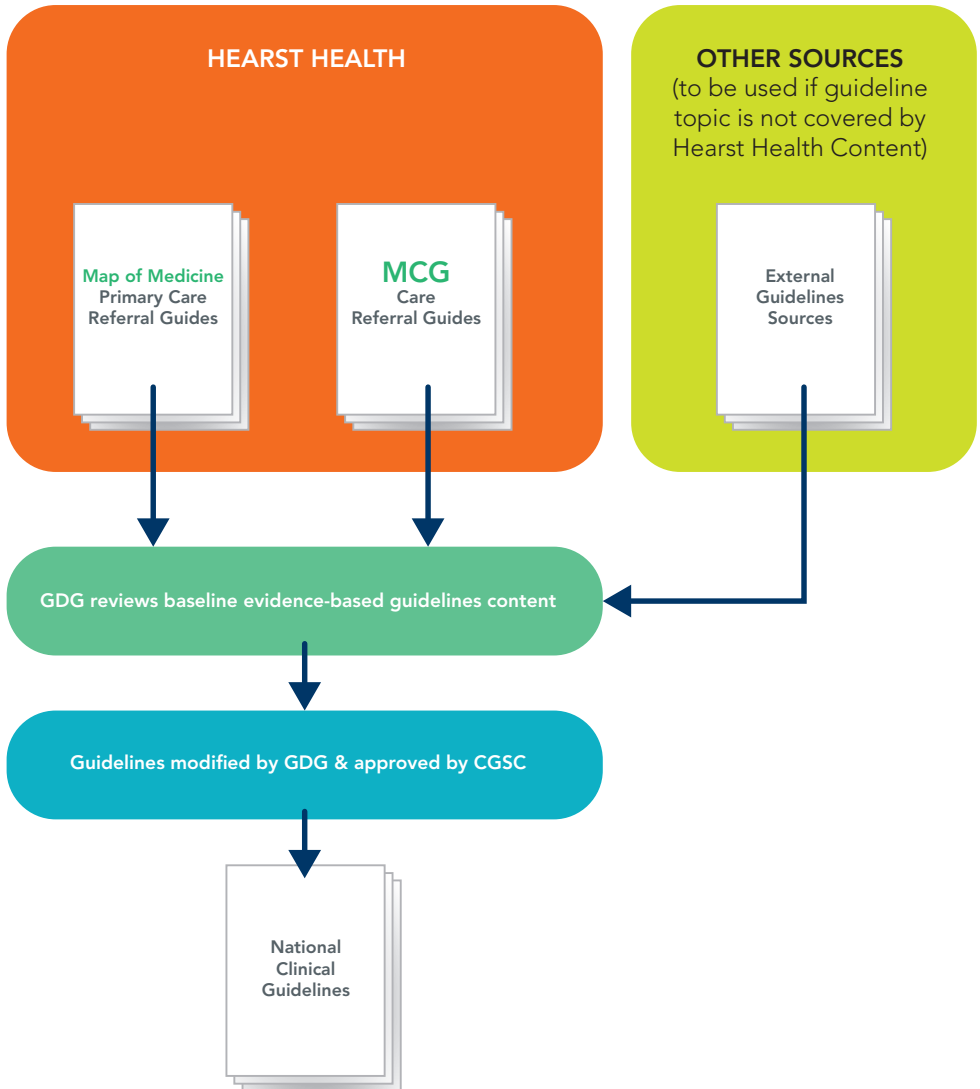
1. Specialized Editorial Team review the National Clinical Guideline
2. Clinical Care Pathway drafted using Map Management Suite software
3. GDG reviews Pathway
4. Pathway iteratively modified by Guidelines working group in response to feedback until to match the need /context of Qatar
5. CGSC reviews and approves Pathway
6. Pathways published to an open-access portal accessible via link accessible from the MOPH website

Qatar's National Clinical Guidelines Accessible via Link
from the MOPH Website

<http://www.moph.gov.qa/national-clinical-guideline>

As a Starting Point

Two sources of high impact guidance from the Hearst Health network will be localized to the Qatar National context and deployed (**Fig. 1**). The use of Hearst Health guidance as a starting point for localization will substantially reduce the time and effort involved in assessing primary and secondary literature directly from evidence databases.

Fig. 1 : Summary of the Guideline Development Process



User Manual and Quick Reference Guide

The MOPH Guidelines Team and the Stakeholder Representatives continue to closely collaborate. A comprehensive User Manual and Quick Reference Guide to be used by National Guidelines and National Pathways end users has been developed.

An overview of the components of the User Manual is as follows:

- **Pilot implementation of National Guidelines and Pathways**

The first set of highest priority Guidelines and Pathways will be launched in 2016. Once approved by the CGSC, the National Clinical Pathways will be published in the MOPH website via an open-access web portal from which it will be accessible to end users within the State of Qatar.

- **Implementation and roll out of National Guidelines and Pathways**

Following the pilot, the remaining National Clinical Guidelines and Pathways, will be published once developed and approved by the CGSC. PDF format versions of the Guidelines will be made available via the MOPH website, whereas Pathway versions will be published within the system and to the portal.

- **Post implementation framework development**

The following two frameworks will be developed and made available:

- Clinical governance and continuous improvement framework
- Framework for determining the impact of the Guidelines on health outcomes.

Information Communication Technology development

Information Communication Technology (ICT) is essential to support accessibility and dissemination of National Clinical Guidelines. Users within Hamad Medical Corporation and the Primary Health Care Corporation may choose to access the guidance at the point of care utilizing the Cerner Map of Medicine integration. Institutions that do not use Cerner will be able to access Guidelines and Pathways directly via the MOPH website link.



Institutions Not Using Cerner Will Be Able to Access Guidelines and Pathways via the MOPH Website Link
At the Point of Care, it is possible that HMC and PHCC Access Guidelines Utilizing the Cerner Map of Medicine Integration

<https://www.moph.gov.qa/national-clinical-guideline>

A feedback link will be made available on the web portal allowing end users to send feedback on the National Clinical Pathways directly to the MOPH Guidelines Team for their review.

Sustainability

The MOPH sees project 2.1.2 as a jumpstart for an “ongoing” Clinical Guideline development, dissemination and review initiative. The MOPH Clinical Guideline team will continually seek, assess and improve upon guideline development activities. By so doing the Ministry will ensure extension of benefits after project closure and work towards ongoing sustainability.



"Our stakeholders provide us with an opportunity to learn and excel, they also happen to be community champions who help drive success"

MOPH Clinical Guideline Development Team, 2016

<https://www.moph.gov.qa/national-clinical-guideline>

www.nhsq.info